



# IQM

INSTITUTE OF QUARRYING MALAYSIA

# Newsletter

FOR MEMBERS CIRCULATION ONLY

Jan - Jun 2023 KDN NO: PP8487/06/2013(032604)

## MESSAGE FROM THE EDITOR

Good day to all fellow members!

IQM Conex 2022 was a great success and we would like to thank all our sponsors and participants for making this happen. We have ended year 2022 successfully and looking forward to a more exciting and prosperous 2023. IQM Conex 2023 is already in the planning stage and we hope to make it a more spectacular event. Stay tuned for more information!!

Congratulations to the IQM Council Members & Management Team for successfully having passed the SIRIM Surveillance Audit on ISO 9001 which was held from 8 – 9 September 2022. Well done!

We would like to thank FYS Marketing for their contribution of articles in our newsletters. Super great articles and worth the read.

During the year 2022, IQM had organized a number of QMC & QMPC courses as listed below:

- i. Legislation Course for Quarrying was conducted from 19 – 20 January at IQM Puchong;
- ii. OSH Course was conducted from 14 – 17 February at IQM Puchong;
- iii. Environmental Management Course was conducted from 8 – 10 March at IQM Puchong;
- iv. Shot-Firer Course 1/2022 was conducted from 21 – 26 March at IQM Puchong;
- v. Drilling Course was conducted from 17 – 19 May at IQM Puchong;
- vi. Crushing and Screening Course was conducted from 13 – 15 June at IQM Puchong;
- vii. Shot-Firer Course 2/2022 was conducted from 18 – 23 July at IQM Puchong;
- viii. Drilling Course was conducted from 8 – 10 August in Kuching;
- ix. Quarry Planning and Design was conducted from 23 - 25 August at IQM Puchong;
- x. Drone Operation Management was conducted from 19 – 21 September at IQM Puchong;
- xi. Quarry Economics was conducted from 8 - 9 November at IQM Puchong; and
- xii. Shot-Firer Course 3/2022 was conducted from 21 – 26 November at IQM Puchong

We hope to see more participants from the industry signing up for these courses especially the younger generation, to upskill themselves.

IQM will continue to provide reliable and up to date courses for the upcoming year. Members can refer to the IQM planner inside this publication, and also available for reference on the IQM website.

Once again IQM wish to remind members to renew their membership for year 2023 which will be due in March 2023. The CPD requirement is still voluntary and members are highly recommended to submit their CPD records for 2022.

THANK YOU!

### INTERNATIONAL AFFILIATIONS:



The Institute of Quarrying  
United Kingdom



The Institute of Quarrying  
Australia



The Institute of Quarrying  
Southern Africa



The Institute of Quarrying  
New Zealand



The Institute of Quarrying  
Malaysia



The Institute of Quarrying  
Hong Kong



# 2023 IQM COURSES AND ACTIVITIES

## JANUARY

**Membership  
Renewal**

**17 - 18 January**  
Blast Monitoring  
Course (IQM)

**CNY Holidays**

**IQM  
NEWSLETTER**

## FEBRUARY

**13 - 15 February**  
Legislation Course  
for Quarrying (IQM)

**28 Feb - 1 Mac**  
Blast Monitoring  
Course (Penang)

**CONEX  
ANNOUNCEMENT**

## MARCH

**6 - 11 March**  
Training Course for  
Shot-Firers 1/2023  
(Kota Kinabalu)

**20 - 22 March**  
Drilling Course (IQM)

**PUASA MONTH**

## APRIL

**QUARRY  
DIRECTORY 2023**  
(out for sale)

**6 April**  
Shot-Firers Exam

**HARI RAYA  
HOLIDAY**

## MAY

**8 - 10 May**  
Crushing & Screening  
Course (Kuching)

**22 - 24 May**  
Crushing & Screening  
Course (IQM)

## JUNE

**12 - 15 June**  
OSH Course (Penang)

**20 - 21 June**  
Blast Monitoring Course  
(Kuantan)

**24 June**  
21st AGM / Technical Talk  
(IQM/Four Points by  
Sheraton)

## JULY

**3 - 5 July**  
Drone Operation  
Management &  
Applications (IQM)

**11 - 12 July**  
Strategic Geology &  
Streographic Projection  
in Understanding Rock  
Slope Stability (IQM)

**24 - 29 July**  
Training Course for  
Shot-Firers 2/2023 (IQM)  
**IQM NEWSLETTER**

## AUGUST

**7 - 9 August**  
Quarry Planning &  
Design (IQM)

**10 August**  
Shot-Firers Exam

**21- 22 August**  
Quarry Economics  
(IQM)

## SEPTEMBER

**4 - 8 September**  
Environmental  
Management Course  
(IQM)

## OCTOBER

**23 - 25 October**  
IQM Conex 2023  
(Palm Garden Hotel,  
IOI Resort)

## NOVEMBER

**30 Oct - 4 November**  
Training Course for  
Shot-Firers 3/2023  
(IQM)

**DEEPAVALI HOLIDAYS**

**23 November**  
Shot-Firers Exam  
  
Circulation of QDM 2024  
Space Order Form

## DECEMBER

**5 - 6 December**  
Blast Monitoring  
Course  
(Perak)

**CHRISTMAS/  
NEW YEAR  
HOLIDAYS**



# ANNUAL SUBSCRIPTION FOR 2023

Please be informed that your Membership Subscription Fee for year 2023 is due for payment. Payment can be made by crossed cheque / bank draft / Online Transfer to :

**INSTITUTE OF QUARRYING MALAYSIA BHD**

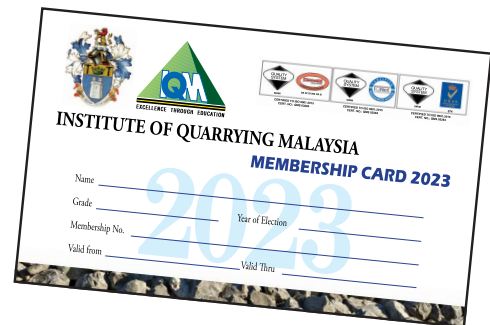
**Maybank 014187208342**

**(Kindly fax / email bank transaction advice)**

Payment should reach us not later than 31st March 2023. If you have any queries or need any clarification on your membership status kindly contact Madam Nirmala Devi at Tel : 03-80624194 / Email : nirmala@iqm.com.my.

The following subscription rates apply for 2023

Fellow (FIQ)	:	RM250.00
Member (MIQ)	:	RM200.00
Technical Member (TMIQ)	:	RM190.00
Associate	:	RM180.00
Student	:	RM 25.00



I \_\_\_\_\_ Membership No : \_\_\_\_\_

enclose my crossed cheque/bank draft/money order no. \_\_\_\_\_

for RM \_\_\_\_\_ being Membership Fee for year \_\_\_\_\_ payable to

**INSTITUTE OF QUARRYING MALAYSIA BHD.**

E-mail : \_\_\_\_\_ Handphone No : \_\_\_\_\_

## Membership Payment Scheme

To encourage members to retain their membership on a long term basis,  
IQM is offering a new membership scheme :

***Membership fee paid in advance for two (2) years,  
entitles member to one (1) year free membership.***

This will benefit not only the member but also reduce the administration cost.  
IQM hopes more members will accept this beneficial scheme.

# QUARRIES AND QUARRYING

# WORLD CLASS QUARRYING



*These handy reference books are appropriately useful as a guide and catalyst to the government, equipment manufacturers, the industry and the academia for further enhancement of the quarrying industry to World Class status.*

The cost of this publication is RM150 for IQM members and RM200 for non-members. Additional RM10 per book for postage within Peninsular Malaysia.

To purchase a copy, please fill in the order form below and send it to us with your payment.

## ORDER FORM

I.....enclose my Cheque / Bank Draft / Money Order No.....

for RM..... being purchase of :

☐ **QUARRIES & QUARRYING** (no of copies .....)

☐ **WORLD CLASS QUARRYING** (no of copies .....)

Payable to "Institute of Quarrying Malaysia Bhd" (Maybank 0141 8720 8342)

Kindly mail book to : \_\_\_\_\_

**For further information kindly contact Madam Nirmala Devi at**

## INSTITUTE OF QUARRYING MALAYSIA

No. 23, Jalan Utama 1/7, Taman Perindustrian Puchong Utama (Puchong Perdana), Seksyen 1,  
47100 Puchong, Selangor DE, Malaysia. Tel: 03-8062 4194/5 Fax: 03-8061 8258  
Website: [www.iqm.com.my](http://www.iqm.com.my) E-mail: [nirmala@iqm.com.my](mailto:nirmala@iqm.com.my)



# TO ALL RECIPIENTS OF QMC & QMPC

## CONTINUING PROFESSIONAL DEVELOPMENT

The Institute is here to recognise and promote the professionalism of people working within the quarrying industry. Professionalism is created through a combination of work experience and qualifications. Continuing Professional Development (CPD) is the process of continual improvement and personal development that documents your career.

We believe that undertaking CPD is a way of ensuring that the qualifications that you have earned are kept up to date.

With effect from 2020, all QMC & QMPC holders have a mandatory 20 hours of CPD required, to maintain your certification and should be an active member of IQM. Attached is the CPD Record Form with examples of activities that qualify for CPD hours.

The QMC & QMPC will now have an expiration date. All certificates issued before 2023 will not be recognized. You will be required to renew your certs by completing the relevant forms. The Certificates have a validity date of 1 year (renewable yearly). We encourage all recipients of the QMC and QMPC to submit their renewal with the summary of CPD Record Form for this year. A renewal fee of RM40.00 will be charged and you will receive an IC size card and a new certificate.

If you are not yet a member of IQM, you can download the membership form from our website [www.iqm.com.my](http://www.iqm.com.my), complete the form and submit together with payment.

For further enquires on the above, kindly contact Madam Nirmala Devi at :

Tel : 03-80624194 / 5, Fax : 03-80618258, email : [nirmala@iqm.com.my](mailto:nirmala@iqm.com.my)

### **QMC / QMPC RENEWAL FORM**

I \_\_\_\_\_ Membership No : \_\_\_\_\_

wish to renew my QMC / QMPC for year \_\_\_\_\_

Certificate No. : \_\_\_\_\_

Enclose is my renewal fee of **RM40.00** transferred online to

**Institute of Quarrying Malaysia Bhd**

**Maybank 014187208342**

# SUMMARY OF CONTINUING PROFESSIONAL DEVELOPMENT (CPD) RECORD

Name : .....

Membership No: ..... Year: .....

## CPD Requirements: 20 hours per year

	Category	Date	CPD Activity / Topic CPD Provider	Allowable hours	Total hours
1	Related Training Activities			No Limit	
2	Informal Learning • On job learning			Maximum 10 hours per year	
3	Conference and Technical Talk			No Limit	
4	Presentation and Papers			Maximum 15 hours per year	
5	Services in Related Activities			Maximum 15 hours per year	
6	Informal Learning • Private study			Maximum 5 hours per year	
			TOTAL		

Sign: .....

Date: .....



# EDTQ 2022

18 - 19 October 2022  
Palm Garden Hotel,  
IOI Resort City, Putrajaya

## ERA OF DIGITAL TECHNOLOGY IN QUARRYING - THE WAY FORWARD

Opening Ceremony and  
the Recipients of Quarry Manager's Certificate 2022



# IQM CONEX 2022





# EDTQ 2022

## Signing of the Interim Letter for a MoU between IQM & JMG



USM Penang presents a Plaque & Certificate of Appreciation to IQM for the sponsorship of USM students to attend the CONEX Event

## Indoor & Outdoor Exhibitors



IQM CONEX 2022

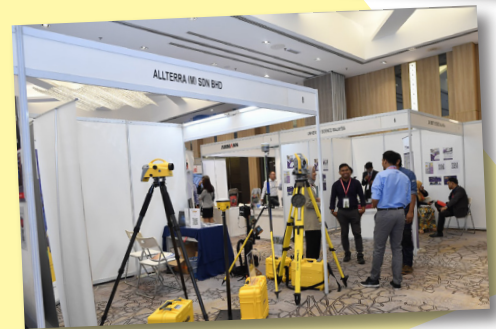


# EDTQ 2022

## Indoor & Outdoor Exhibitors



IQM CONEX 2022



## IQM COUNCIL 2022/2023

**Mr Chen Nyet Lin**  
**Hj Nurul Huda bin Romli**  
**En Mohammad Faiz Bin Zainuddin**  
**Ir Norhamidi Md Din**  
**Mr Pang Kang Ngen**  
**Mr Lee Wen Han, Vincent**  
**Ir Tang @ Tan Hai Hong**  
**Mr Baljeet Singh Kernail Singh**  
**Ir Toh Kar Wai**

**President**  
**Deputy President**  
**Hon. Secretary**  
**Hon. Treasurer**  
**Council Member**  
**Council Member**  
**Council Member**  
**Council Member**  
**Council Member**



# EDTQ 2022

Dinner Sponsored by  
Caterpillar & Sandvik



IQM CONEX 2022



The ladies behind the  
scenes of the dinner event



Highlight of the show,  
Best Booth Award and the Raffles Draw



Best Booth Award went to the  
Department of Minerals &  
Geoscience Malaysia







Metso:Outotec

**INSTITUTE OF QUARRYING MALAYSIA'S  
20TH ANNUAL GENERAL MEETING  
&  
SPONSORED TECHNICAL TALK BY  
POWER RAM SDN BHD / METSO : OUTOTEC**

**GET MORE FROM YOUR ASSETS  
WITH NEXT GENERATION REMOTE MONITORING**

**PRESENTED BY MR CAMPBELL JOHNSTON,  
CAPITAL DISTRIBUTION MANAGER, METSO:OUTOTEC**

25TH JUNE 2022







# Rising Standards and Competence with CPD

The health, safety, and well-being of the quarrying workforce continues to be the industry's top priority. It is imperative that professionals are equipped with the knowledge, understanding, and practical application of key regulations and standards that affect the sector in order to achieve the ultimate goal of delivering safe practices in the working environment.

As the membership organization for the mineral products sector, the Institute of Quarrying (IQ) champions the role of continuing professional development (CPD) in raising standards by developing a more engaged, fully trained, and competent workforce.

It is through collaborations with influential industry partners and associations that IQ members have access to a comprehensive suite of CPD learning materials and educational resources, enabling them to raise standards, share knowledge, and be recognized as highly skilled professionals. Viv Russell FIQ is President of the Institute of Quarrying, as well as chair of the Quarries National Joint Advisory Committee (QNJAC). Throughout his career, he has helped raise standards in health and safety, sustainability, operations management, and community relations.

He says: 'A critical part of safety performance is continuing professional development, which is why collaborative working, visible felt leadership, and worker engagement across the mineral products sector supply chain are key to preventing workplace accidents and improving occupational health.'

'QNJAC's 'Target Zero' initiative aimed at ultimately delivering quarrying as a zero-harm industry resonates with everyone.

It recognizes that a safe place to work has a positive impact on our sector's public perception, as well as increasing productivity and profitability, but most importantly, it's about keeping our people safe from harm.

'The priority for all of us is to ensure we work together effectively and utilize all the tools and resources available to us in making the workplace safer, raising standards, and developing a competent workforce.'

## Health and Safety CPD Days

At the very heart of IQ is the community network of industry professionals all sharing knowledge and best practice. Its network of regional branches organizes regular events for members to network and socialise.

The Derbyshire, Yorkshire, and Midlands 10 branches regularly hold Health and Safety CPD Days for members.

Featuring a back-to-back schedule of insightful presentation led by influential industry figures and leading businesses, the events are pivotal in educating and discussing health and safety best practices across the quarrying and extractives sector.

Topics covered in the current series of CPD events include self-audits, mental health and well-being, pedestrian safety, and inspections and guidance. Presenters include Viv Russell on behalf of QNJAC; Anthony Elgey, IQ education and skills manager; Mike Phillips, director of MinExp and chief executive officer of the British Aggregates Association; David Lukey, managing director of Concrete Marketing Consultants Ltd; Dr Jeff Adderley and Sam Skinner of EPC-Group; and Andy Meadows, QNJAC electrical technical advisor and







member of the Isolation Task and Finish Group.

John McGough FIQ is IQ Derbyshire branch chairman. Commenting on the recent Health and Safety CPD Day, which was held in Chesterfield, he says: 'It was great to be able to chair a successful health and safety conference, the first face-to-face one to be held post-Covid. Maintaining CPD is so important and this was an opportunity for the delegates to receive informative updates from the presenters, who we thank for giving up their time. The event was well supported, and the feedback was very positive!

IQ members who would like to find out more information about upcoming Health and Safety CPD Days, or register their attendance, are advised to visit:

[www.quarrying.org/health-safety-cpd](http://www.quarrying.org/health-safety-cpd)

### IQ Personal Development Wheel

One of the latest IQ developments and added benefits for members is the new professional mapping tool, the IQ Personal Development Wheel.

The tool helps mineral products professionals carry out an effective self-audit of knowledge and skills levels against the IQ Skills Wheel, helping to achieve career goals and build agile workplaces.

James Thorne, IQ chief executive officer, explains: 'Encouraging our members to actively participate in CPD activities is at the heart of what we do. Investing in professional development means that each of us is equipped with the required skills to remain relevant and competent.

'Our Personal Development Wheel brings together the IQ Skills Wheel with our CPD recording tool. Members can carry out their own self-assessment of their knowledge and skills levels against the IQ Skills Wheel quadrants. Using the results, they can create a personalized development plan in the areas they wish to develop in order to achieve their career goals.

For example, if a quarry deputy wanted to progress to a quarry manager role, the Personal Development Wheel helps identify the areas that they need to develop.

'The IQ Skills Wheel shows how to build skills across different knowledge areas. Now, combined with the Personal Development Wheel, individuals and businesses have a guide to assist with personal development plans and can help build flexible and agile workplaces based on a better understanding of industry training needs.'

Brendon Marshall MIQ, operations manager at Sibelco, says: 'I highly recommend the Personal Development Wheel to all IQ members. The ability to view your strengths and how it relates to the Skills Wheel, with the added benefit of comparing

your results to job roles that are based on the views of industry employers, helped me to create a plan that focuses on CPD that will really benefit me"

### Workplace safety guidance

The most recent guidance developed by the Quarries National Joint Advisory Committee (QNIAC) to support the activities of the Strategic Forum for Health and Safety in Mineral Products is a Workplace Transport & Pedestrian Interface - Self Audit tool.

Workplace transport-related incidents still represent a significant proportion of the serious and fatal injuries in the industry. Data from the Health and Safety Executive (HSE) reveal that 19% of fatalities were reported as being 'struck by moving vehicle'

The self-audit tool for the workplace transport and pedestrian interface has been developed by a working group from QNIAC to complement the handbooks and posters produced by the Mineral Products Association (MPA) and a free e-learning module from Mineral Products Qualifications Council (MPQC). Following the Plan-Act-Do methodology, users of the audit can record their findings, use them to write an action plan, and make a record of the actions taken as a result of the audit. The questions included in the audit represent a good starting point that will be adequate in most situations.

Viv Russell, chair of QNIAC, says: "The tool represents the latest guidance from our working groups that support the industry in its ambition to improve its performance in key areas. The strength of the QNIAC groups is the collective experience and knowledge of the individuals developing these tools. They know the issues and the industry, which ensures the tools are relevant and can deliver real change when adopted by organizations'

The QNIAC Self Audit tool can be found at [www.qnjac.co.uk](http://www.qnjac.co.uk)

Information about IQ membership can be found at: [www.quarrying.org](http://www.quarrying.org)

### Reference

1. Health and Safety Day, IQ Derbyshire branch, available at <https://cdn.me-qr.com/pdf/9926134.pdf>

*An extract from the November 2022 Quarry Management Journal*



# Quarry Modelling and Simulation- Removes Guesswork and Maximize Plant Productivity



By  
Ts Dr Ku Esyra Hani Ku Ishak

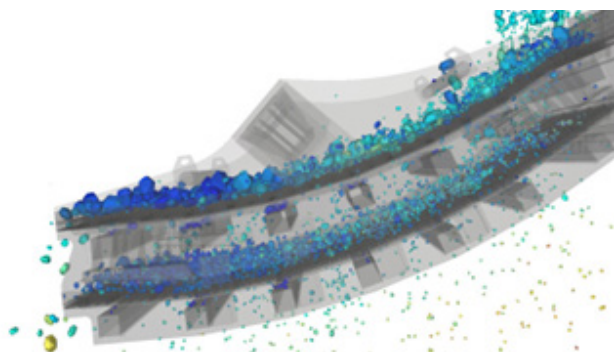
EnviroMine Research Group,  
School of Materials and Mineral Resources Engineering,  
Universiti Sains Malaysia, 14300 Nibong Tebal, Penang.  
[www.enviromineusm.com](http://www.enviromineusm.com)

The quarry production process comprises different stages that must be carefully managed to attain high productivity and low costs. During quarry operation, the operating conditions fluctuate, which may impact the quarry's production. When it comes to the operational plant's capabilities, the majority of producers either know the exact amount of material the plant produces but are unaware of its capacity or vice versa. In point of fact, most plants are not being exploited to their full potential; hence, a restructuring of the production strategy is required. Producers, engineers, equipment makers, and dealers can all benefit from using modelling and simulation tools to model material flow and processes in quarry operations. A quarry modelling and simulation provide four essential functions.

## 1. To detect operational issues and measure production performance

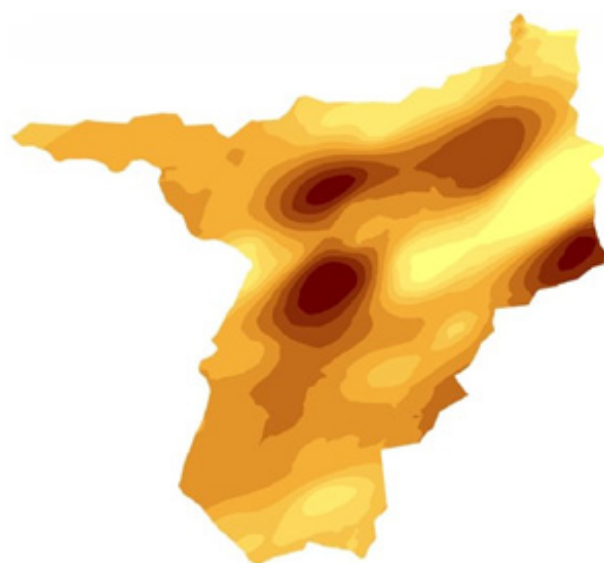
Over the past 20 years, simulation software has become more sophisticated. Today, most software can replicate a plant's real production capabilities with surprising accuracy. Modelling and simulation software enables users to construct crushing, screening, and washing plants on their computer displays, regardless of their complexity. Simulation software aids in the identification and resolution of a number of operational issues, such as bottlenecks and inefficiencies, by exposing the disparity between what the plant should generate and what it actually produces. In other words, it bridges the gap between theoretical and actual production capability. Understanding the manufacturer's stated capacity for each piece of process equipment, such as from the feeders to the crushers to the conveyors to the screens, etc., is the first step in creating a simulation model.

Through this, users can compare calculated results with actual field outcomes by selecting equipment types and settings, monitoring flow rates and gradations at predetermined points, and simulating operating the plant. The data generated by process flow simulators can become one of the most important elements of a plant's performance measurement when confirmed by field sampling and testing.



## 2. To optimize the quarry's operations

The optimization model comprises three parts: a module for keeping track of productivity, a module for simulating what might happen, and an optimization algorithm. The production monitoring module calculates the site's productivity based on the quarry's current operational conditions. The optimization process is executed on an updated simulation model to identify the ideal values for the site parameters once the site productivity reaches a predetermined threshold. In addition, users may also simulate an unlimited number of "what-if" scenarios to visualize options, such as replacing equipment or adjusting feed rate and gradation settings, to accurately assess these potential changes' impact on optimizing plant efficiency and achieving optimal production mixes. It will also allow the operators to test various situations to objectively identify which results in the greatest operational performance, such as throughput and cycle times.



Ordinary kriging prediction map  
(As)

Filled contours

.29–1.278	4.223–5.584
1.278–1.996	5.584–7.458
1.996–2.517	7.458–10.037
2.517–3.235	10.037–13.589
3.235–4.223	13.589–18.48

*Prediction of arsenic level in soil. Source: Assessment of Potential Location of High Arsenic Contamination Using Fuzzy Overlay and Spatial Anisotropy Approach in Iron Mine Surrounding Area*



### 3. To detect existing and future potential safety risk hotspots

Before investing a company's time and money, simulation tools may be used to evaluate the most efficient and cost-effective adjustments in operating procedures to reduce risk to personnel, equipment, and production downtime. In addition, modelling and simulation have also been used in predicting soil erosion, the distance of fly rock during the blasting process, the arsenic level in soil and water, the prediction of air contamination, and many other environmental problems. By collaborating with certified safety auditors, the risk indicated or given by the simulation tool may be assessed and recommendations for modifying operating processes to mitigate the risk can be made.

### 4. To support quarry current and future planning

Simulation software is an excellent tool for designing new plants since it can be used to optimize the structure of the proposed plant and determine what equipment will best to achieve the desired goals. Most simulation software nowadays can assist quarry operators in maximizing operations by outlining plant layout, machine placement and product pre-calculations. This helps companies improve their facilities, effectively improving the quarry site's productivity, reducing waste, and

improving environmental sustainability. Some of the simulation tools not only can simulate the production plant but also can design and simulate the quarry traffic movements to detect safety hot spots, gain a better knowledge of traffic and quarry operations, and enable the testing of alternative scenarios prior to implementation to make quarry operations safer, more efficient, and more profitable.

### The future of the quarry modelling and simulation system

The area of modelling and simulation is constantly developing. Now, simulation software has the ability to connect quarry production to the sale forecasts directly. It is well known that plants operate to satisfy annual sales demands and must be accomplished within the allocated timeframe. Many facilities produce products in various combinations at varying rates and require a strategy to align output to sales levels. Once an accurate plant model is in place, production scheduling software linked to the simulator allows producers to virtually "test drive" production scenarios utilizing expanded operating modes, offering a straightforward plan for the year.

## Quarry Moon Festival Night 2022 At FYS Agropark



On Saturday 10th September 2022 FYS Marketing Sdn Bhd and Pertubuhan Hakka Seberang Perai jointly organized and fully sponsored the first Quarry Moon Festival Night 2022 at FYS Agropark. An estimated 150 people from invited guests and local residence attended the function. The function started at 7.30 pm with Lion dance to welcome the guests. Mr Zeems Foo Kheng Sin from FYS marketing Sdn Bhd as Organising Chairman delivered the welcoming address while

Dato' Wen Zi Long, President Pertubuhan Hakka Seberang Perai as co-organiser delivered second welcoming speech. YB Chong Eng representing the Chief Minister of Penang officiate the function. YB Heng Lee ADUN Berapit also gave a speech. After the speeches, light refreshment was provided and the guests had a tour of the lantern and Zodiac/Horoscope photography session. To make the event more interesting, guess the riddle game and karaoke were conducted.

YB Chong Eng, Pengerusi Jawatankuasa MMK Pembangunan Sosial dan Hal Ehwal Bukan Islam (represent Penang Chief Minister YAB Tuan Chow Kon Yeow) praised FYS Marketing Sdn Bhd for organising the event by providing Agropark as the venue. The event is in line with the green quarry environment initiatives and she suggested that more cultural and tourism activities be carried out as part of Quarry Edu-Tourism and thus changing towards positive public perceptions on the quarrying activities. YB Heng Lee Lee, Adun for Berapit also praised FYS Quarry for undertaking bold steps and initiatives which were different from other quarries working culture. Although FYS Quarry is adjacent to residential areas, FYS is able to take initiatives to find solutions for the public complaints, sharing the local environment with each other and co-exist with each other in harmonious atmosphere. Dato' Wen Zi Long, president of the Pertubuhan Hakka Seberang Perai said that Hakka people should follow the footsteps of the sages, gathering the strength of the Hakka people to continue carry forward and inherit the Hakka spirit of the Chinese people. He said FYS Marketing Sdn Bhd is the first quarry to innovate and break through the traditional operation by combining the manufacturing system and tourism concept then apply green technology to develop tourism by quarrying. He thanked FYS for providing beautiful and comfortable environment for villagers to celebrate the Mid-Autumn Festival.

Theme for the event is to realise the potential of Green-Quarry EduTourism with the objectives of:

- i. Green-Quarry EduTourism “Rebranding Malaysia quarry industry positive public image”.
- ii. Contribution of quarrying to national development “Civilization Begins from Quarry”.
- iii. Quarrying in the era of Environmental, Social, Governance (ESG).
- iv. Integrated community that quarries and community can co-exist.
- v. Reunion of “Keluarga Malaysia” in conjunction with Merdeka Day and Malaysia Day.

FYS initiatives on quarrying best practices – ESP is to provide a platform to let public better understanding of Malaysia quarry industry and upgrading quarryman career professionally. Tripartite collaborations with Jabatan Mineral and Geosains Malaysia (JMG), Penang Quarries Association (PQA), Malaysia Quarries Association (MQA), Institute of Quarrying Malaysia (IQM), School of Materials and Mineral Resources Engineering Universiti Sains Malaysia (USM) and other agencies are to transform the Malaysian quarry industry into an excellent working culture where the contribution are highly valued by the public.

By adopting best practices - ESP model and continuous improvement year after year, FYS has successfully minimize the environmental degradation and safety issues and become exemplary model for the quarry industry in the region and received 3 national and 4 international awards. Quarry industry is essential to national development. Housing development, community infrastructure, highway, airport, railway, school, hospital are human necessity, hence, quarrying – the path to modern civilization.

As part of Corporate Social Responsibility (CSR) collections were made to help the underprivileged through donation to Yayasan Sin Chew. A total of RM3,988 were collected from FYS Marketing Sdn Bhd RM1,100, Institute of Quarrying Malaysia (IQM) RM1,000, Penang Quarries Association (PQA) RM888 and Malaysian Rock Product Sdn Bhd RM1,000. Malaysia Quarries Association (MQA) also contribute 100 copies of MQA Yearbook to promote MQA 5 Strategic Direction (1) Community and Social Events (2) Engagement and Cooperation with Government Agencies (3) Training, Technical Workshop & Education Visit (4) Local & International Cooperation (5) Publicity to brand build the quarry industry. MQA had played an importance role of community and social events to local community for them to understand the importance of quarry industry and will make the industry more acceptable to the public and dispel all negative perceptions.



FYS would like to thanks Pertubuhan Hakka Seberang Perai that sponsored lions dance, food, tanglong, karaoke and a lot more program on the Quarry Moon Festival Night 2022.

**Prepared By Zeems Foo Kheng Sin**  
Chairman of FYS Marketing Sdn Bhd

